



Pacific OCS Region Update

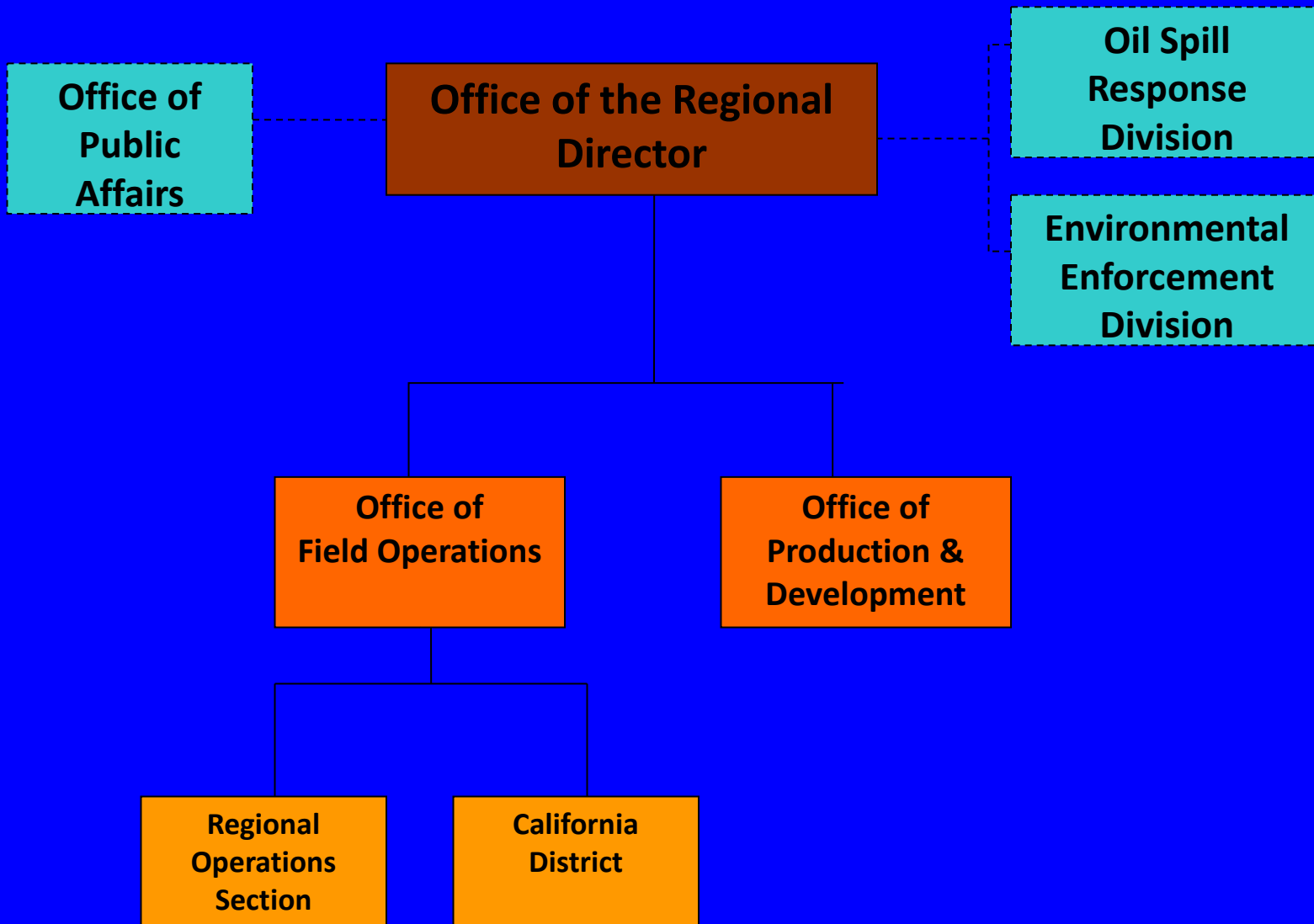
1st Annual BSEE Domestic and
International Standards Workshop

New Orleans, LA

Nov. 14-15, 2012



Regional Organization





Regional Overview

- 28 BSEE employees onboard
- FTE ceiling of 52 (42 regional; 10 HQ/contractor)
- Large focus on recruiting and hiring
- Emphasis on safe operation, environmental compliance, and conservation of resources
- Emerging as an environment for pilot programs



Regional Overview (cont.)

- Due to higher oil prices, operators upgrading facilities/infrastructures to maintain/increase production
 - Several structural upgrades
 - Largest pipeline project since 1998 completed in 2011
 - Currently upgrading the POCSR's 2nd oldest pipeline system



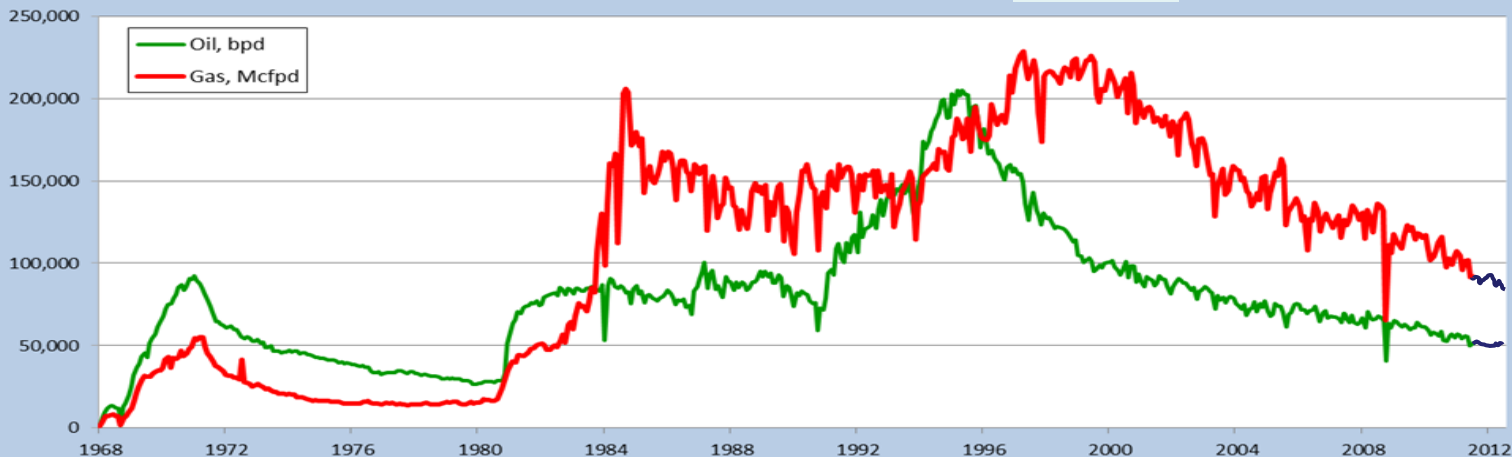
Regional Overview (cont.)

- 4 Investigations, 1 Civil Penalty, 1 Appeal
- APD/APM requests (Subpart E)
 - FY 2012
 - 23 APDs received (9 of which were revisions)
 - 18 APDs approved (1 withdrawn)
 - 87 APMs received (17 of which were revisions)
 - 86 APMs approved
- Hazard reviews for each APD (30 CFR 250.414)
- 2 ongoing field studies – Beta and Sockeye (30 CFR Subpart K)
- 121 INCs (Jan. '12 to present); 0 rescinded
- Onsite inspections conducted
 - CY 2011: 990 (5818 components on 172 facility visits)
 - CY 2012: 800 (7843 components on 131 facility visits) YTD

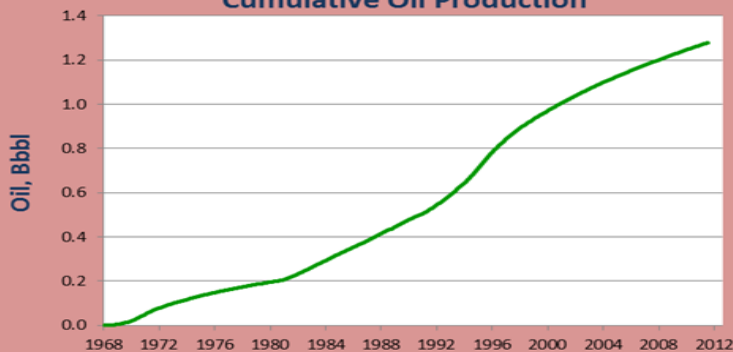


PACIFIC OCS DAILY AND CUMULATIVE PRODUCTION

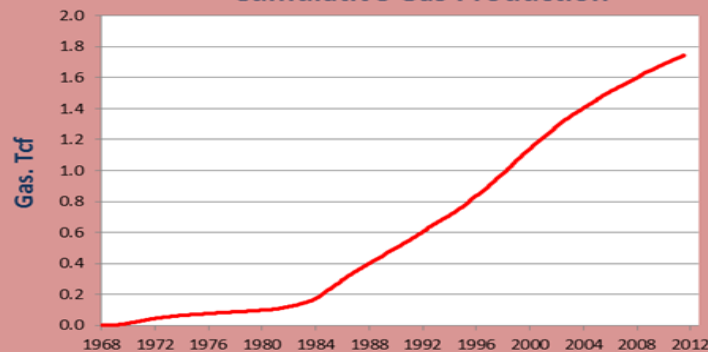
POCS Daily Production Through 8/2012



Cumulative Oil Production



Cumulative Gas Production

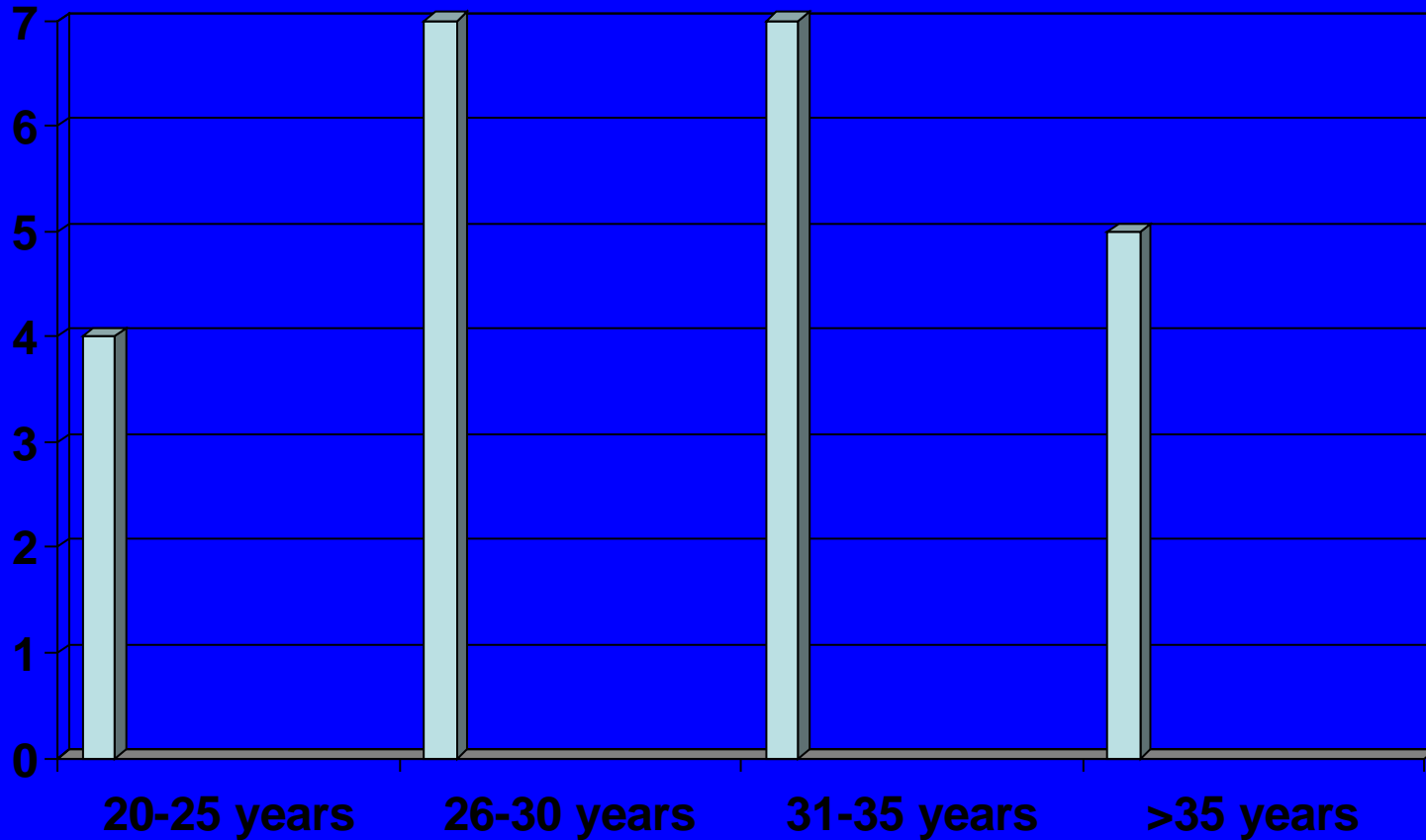


Current Oil Production: ~51,000 bopd
Cumulative Oil: almost 1.3 Billion bbl

Current Gas Production: ~85,000,000 cfpd
Cumulative Gas: almost 1.8 Trillion cu. ft.



POCSR Structures by Age



March 2007



Aging Infrastructure

- These structures and much of the equipment require heightened vigilance to preclude accidents and fires.
- BSEE's Office of Structural and Technical Support assists the Pacific Region to address structural inspections and maintenance.





Facility Inspection Strategy



- Production Inspections
 - Annual (mandatory)
 - Partial Production
- Drilling / Workover Inspections
- Completions Inspections
- Abandonment Inspections
- Environmental
- Pipelines
- Sales Meter Proving
- Site Security
- Flaring
- Hydrogen Sulfide / Sulfur Dioxide
- Compliance
- Accident Investigation
- Other
- Inspections conducted 365 days/year, weather permitting





Pipelines

- 7 New pipelines in FY12 (30 CFR 250 Subpart J)
 - 2 Right-of-way
 - 5 Lease term
- API Standards/Practices Applied:
 - API Spec 6D, “Specifications for Steel Gate, Plug, Ball, and Check Valves for Pipeline Service”
 - API RP 14C, “Recommended Practice for Analysis, Design, Installation and Testing of Basic Surface Safety Systems for Offshore Production Platforms”
 - API 1104, “Standard for Welding Pipelines and Related Facilities”
 - API Standard 5LX, “Specifications for High Test Line Pipe”



Questions?

Jaron E. Ming
Regional Director
Pacific OCS Region
jaron.ming@bsee.gov